

WMSDB - Worldwide Mollusc Species Data Base



Family: TROCHOMORPHIDAE

Author: Claudio Galli - claudio@bagniliggia.it (updated 05/mag/2015)

Class: **GASTROPODA**

--- Clade: **HETEROBRANCHIA-PULMONATA-EUPULMONATA-STYLOMMATOPHORA-SIGMURETHRA-GASTRODONTOIDEA**

----- Family: **TROCHOMORPHIDAE** Möllendorff, 1890 (Land)

- Alphabetic order - when **first name** is in bold the species has images

Taxa=130, Genus=11, Subgenus=16, Species=94, Subspecies=0, Synonyms=8, Images=33

- albocincta, [Trochomorpha albocincta](#) (L. Pfeiffer, 1845)
- apia, [Trochomorpha apia](#) (J.B. Hombron & C.H. Jacquinot, 1852)
- approximata, [Trochomorpha approximata](#) E.J. Le Guillou
- asteriscus, [Kondoa asteriscus](#) H.B. Baker, 1941
- aukiensis, [Trochomorpha aukiensis](#) W.F. Clapp, 1923
- bakeri, [Trochomorpha bakeri](#) G.A. Solem, 1959
- beckiana, [Trochomorpha beckiana](#) (O.F. von Möllendorff, 1842)
- belmorei, [Trochomorpha belmorei](#) J.C. Cox
- bicolor, [Videna bicolor](#) E.C. Von Martens, 1864
- brookei, [Exrhysota brookei](#) A. Adams & L.A. Reeve, 1848
- cambodjiensis, [Bertia cambodjiensis](#) L.A. Reeve, 1860
- cambojiensis, [Bertia cambojiensis](#) (L.A. Reeve, 1860)
- carolinae, [Trochomorpha carolinae](#) H.B. Baker, 1941
- carthcartae, [Videna carthcartae](#) (L.A. Reeve, 1854)
- castra, [Videna castra](#) (W.H. Benson, 1852)
- concava, [Trochomorpha concava](#) W.F. Clapp, 1923
- conoides, [Trochomorpha conoides](#) H.B. Baker, 1941
- contigua, [Trochomorpha contigua](#) H.B. Baker, 1941
- corallina, [Trochomorpha corallina](#) A. Mousson, 1870
- cornea, [Trochomorpha cornea](#) C. Hedley, 1891
- crassicarinata, [Videna crassicarinata](#) H.C. Fulton, 1907
- cressida, [Trochomorpha cressida](#) A.A. Gould, 1843
- crossei, [Videna crossei](#) (J.G. Hidalgo, 1890)
- crustulum, [Trochomorpha crustulum](#) (J.C. Cox, 1873)
- cultrata iheyaensis, [Trochomorpha cultrata iheyaensis](#) H.A. Pilsbry & Y. Hirase, 1905 - syn of: [Videna horiomphala](#) (L. Pfeiffer, 1854)
- cultvata, [Videna cultvata](#) H.A. Pilsbry & Y. Hirase, 1904
- cyathus, [Vitrinoconus cyathus](#) (L. Pfeiffer, 1845)
- deiopaea, [Trochomorpha deiopaea](#) (G.F. Angas, 1869)
- depressostriata, [Trochomorpha depressostriata](#) A. Mousson, 1870
- doherthyi, [Trochomorpha doherthyi](#) T.H. Aldrich, 1898
- electra, [Videna electra](#) (C.G. Semper, 1873)
- entomostoma, [Brazieria entomostoma](#) (J.B. Hombron & C.H. Jacquinot)
- erasa, [Brazieria erasa](#) H.B. Baker, 1941
- eudora, [Trochomorpha eudora](#) (G.F. Angas, 1869)
- eurydice, [Trochomorpha eurydice](#) (A.A. Gould, 1848)
- fessonnia, [Trochomorpha fessonnia](#) G.F. Angas, 1869
- flava, [Trochomorpha flava](#) W.F. Clapp, 1923
- formosana, [Videna formosana](#) H.A. Pilsbry & Y. Hirase, 1905
- froggatti, [Videna froggatti](#) (T. Iredale, 1941)
- godeti, [Trochomorpha godeti](#) (G.B. Sowerby, 1869)
- gouldiana, [Videna gouldiana](#) H.A. Pilsbry, 1901
- granulosa, [Videna granulosa](#) (O.F. von Möllendorff, 1888)
- haenseli, [Videna haenseli](#) P.B. Schmacker & O. Böttger, 1891
- hamonvillei, [Trochomorpha hamonvillei](#) P. Dautzenberg
- horiomphala, [Videna horiomphala](#) (L. Pfeiffer, 1854)
- kambarae, [Trochomorpha kambarae](#) H.B. Baker, 1941
- kantavuensis, [Trochomorpha kantavuensis](#) A. Garrett, 1887
- kondorum, [Hogolua kondorum](#) H.B. Baker, 1941
- kondorum, [Kondoa kondorum](#) Unknown
- kuesteri, [Trochomorpha kuesteri](#) (L. Pfeiffer)
- lacerata, [Videna lacerata](#) C.G. Semper, 1874
- latimarginata, [Trochomorpha latimarginata](#) (E.A. Smith, 1884)
- lator, [Trochomorpha lator](#) A.R.J.B. Bavay & P. Dautzenberg, 1908 - syn of: [Sivella lator](#) (A.R.J.B. Bavay & P. Dautzenberg, 1908)
- latissimus, [Vitrinoconus latissimus](#) O.F. von Möllendorff, 1893
- lomonti, [Trochomorpha lomonti](#) (J.W. Brazier, 1877)
- ludersi, [Trochomorpha ludersi](#) (L. Pfeiffer, 1855)
- luedersi, [Trochomorpha luedersi](#) L. Pfeiffer, 1855

- **lutaria**, [Brazilia lutaria](#) H.B. Baker, 1941
 - luteobrunnea, [Videna luteobrunnea](#) (O.F. von Möllendorff, 1890)
 - **macgregori**, [Coxia macgregori](#) J.C. Cox, 1870
 - marmorata, [Trochositala marmorata](#) A.A. Schileyko, 2002
 - **mcleani**, [Trochomorpha mcleani](#) W.J. Clench
 - **meleagris**, [Trochomorpha meleagris](#) L. Pfeffer, 1845
 - melvillensis, [Trochomorpha melvillensis](#) G.A. Solem, 1989
 - **merziana**, [Trochomorpha merziana](#) L. Pfeffer, 1852
 - merzianoides, [Trochomorpha merzianoides](#) A. Garrett
 - **metcalfei**, [Videna metcalfei](#) L. Pfeffer, 1845
 - minuscula, [Brazilia minuscula](#) H.B. Baker, 1941
 - montana, Trochomorpha montana O.F. von Möllendorff, 1901 - syn of: [Sivella montana](#) (O.F. von Möllendorff, 1901)
 - **niasensis**, [Videna niasensis](#) H.C. Fulton, 1907
 - **nigrans**, [Trochomorpha nigrans](#) E.A. Smith, 1889
 - nigritella, [Trochomorpha nigritella](#) L. Pfeffer, 1845
 - obesa, [Brazilia obesa](#) H.B. Baker, 1941
 - oleacina, [Videna oleacina](#) (C.G. Semper, 1874)
 - **ostreola**, [Kondoa ostreola](#) Unknown
 - pagodula, [Videna pagodula](#) (C.G. Semper, 1873)
 - pellucida, [Videna pellucida](#) H.A. Pilsbry & Y. Hirase, 1905
 - planoconus, [Trochomorpha planoconus](#) A. Garrett
 - **planorbis**, [Videna planorbis](#) R.P. Lesson, 1831
 - pumila, [Videna pumila](#) (H.B. Baker, 1941)
 - **repanda**, [Videna repanda](#) L. Pfeffer, 1861
 - saigonensis, Trochomorpha saigonensis J.C.H. Crosse, 1867 - syn of: [Geotrochus saigonensis](#) (J.C.H. Crosse, 1867)
 - sapeca, [Videna sapeca](#) (P.M. Heude, 1890)
 - **schmackerii**, [Trochomorpha schmackerii](#) O.F. von Möllendorff, 1894
 - **sebacea**, [Trochomorpha sebacea](#) L. Pfeffer, 1856
 - serena, [Trochomorpha serena](#) (J.C. Cox, 1873)
 - shermani, [Videna shermani](#) L. Pfeffer, 1865
 - **sibuyanica**, [Trochomorpha sibuyanica](#) J.G. Hidalgo, 1866
 - splendidula, [Videna splendidula](#) (O.F. von Möllendorff, 1890)
 - **strubelli**, [Videna strubelli](#) O. Böttger, 1890
 - swainsoni, [Trochomorpha swainsoni](#) (L. Pfeffer, 1846)
 - tavinniensis, [Trochomorpha tavinniensis](#) A. Garrett
 - **timorensis**, [Videna timorensis](#) (E.C. Von Martens, 1867)
 - tonkinorum, Trochomorpha tonkinorum L.J. Morlet, 1884 - syn of: [Sivella paviei](#) (L.J. Morlet, 1884)
 - **trochiformis**, Trochomorpha trochiformis A.E.J. Férussac - syn of: [Trochomorpha typus](#) H.B. Baker, 1938
 - troilus, [Trochomorpha troilus](#) (A.A. Gould, 1846)
 - **typus**, [Trochomorpha typus](#) H.B. Baker, 1938
 - velata, [Brazilia velata](#) H.B. Baker, 1941
 - **videna**, [Trochomorpha videna](#) L. Pfeffer
 - **xiphias**, [Trochomorpha xiphias](#) L. Pfeffer, 1856
-

Class: GASTROPODA

--- Clade: HETEROBRANCHIA-PULMONATA-EUPULMONATA-STYLOMMATOPHORA-SIGMURETHRA-GASTRODONTOIDEA

----- Family: **TROCHOMORPHIDAE** Möllendorff, 1890

Habitat= Land, Taxonomic order

Taxa=130, Genus=11, Subgenus=16, Species=94, Subspecies=0, Synonyms=8, Images=33

Genus: **Hogolua** F.C. Baker, 1941 (syn: Hongolua - 1 SP, 0 IMG)

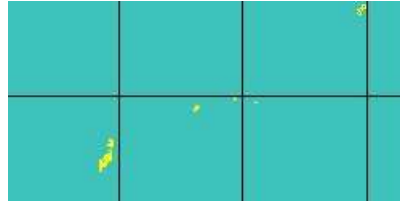


576400004

Hogolua
kondorum

H.B. Baker, 1941

Micronesia



Genus: **Trochositala** A.A. Schileyko, 2002 (1 SP, 0 IMG)

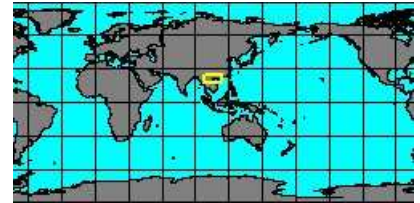
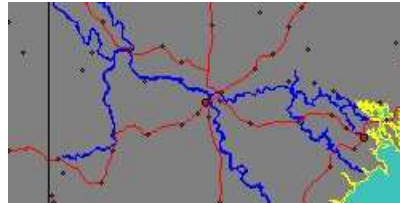


5792000167

Trochositala
marmorata

A.A. Schileyko, 2002

Vietnam, Hanoi



Genus: **Vitrinoconus** J.O. Semper, 1873 (2 SP, 0 IMG)



5756000035

Vitrinoconus
cyathus

(L. Pfeiffer, 1845)

No Georeferenced data available

to be checked



5756000041

Vitrinoconus
latissimus

O.F. von Möllendorff, 1893

No Georeferenced data available

to be checked

SubFamily: TROCHOMORPHINAE - Genus: **Bertia** C.M.F. Ancey, 1887 (2 SP, 0 IMG)

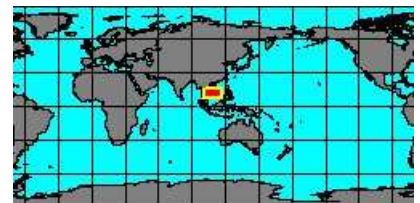


4340854093

Bertia
cambojiensis

L.A. Reeve, 1860

Vietnam



5792000169

Bertia
cambojiensis

(L.A. Reeve, 1860)

Cambodia



synonyms:

- *Helix mouhoti* L.A. Reeve, 1860

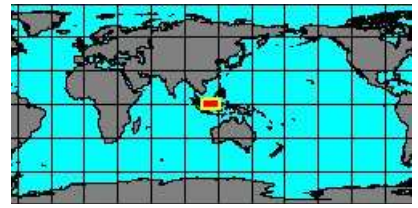
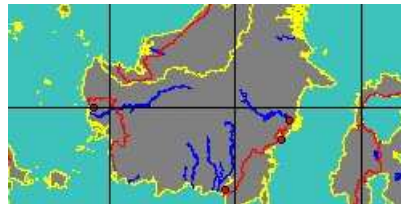
SubFamily: TROCHOMORPHINAE - **Subgenus: Bertia (Exrhysota)** F.C. Baker, 1941 (1 SP, 1 IMG)



4333454025
Exrhytsota
brookei

A. Adams & L.A. Reeve, 1848

Indonesia, Borneo
80 mm



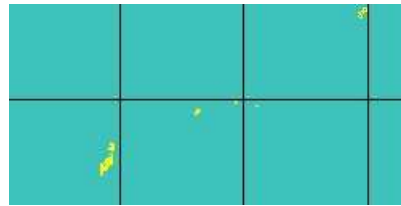
SubFamily: TROCHOMORPHINAE - **Genus: Brazieria** C.M.F. Ancey, 1887 (6 SP, 1 IMG)



5756000004
Brazieria
entomostoma

(J.B. Hombron & C.H. Jacquinot)

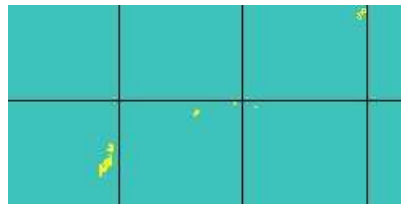
Micronesia



5756000005
Brazieria
erasa

H.B. Baker, 1941

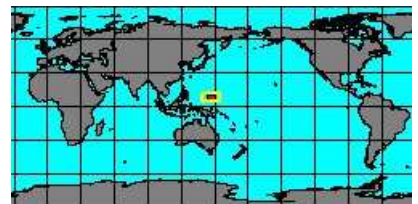
Micronesia



5756000006
Brazieria
lutaria

H.B. Baker, 1941

Micronesia, Caroline Islands
17,4 mm



5756000007
Brazieria
minuscula

H.B. Baker, 1941

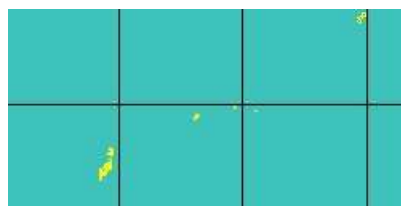
No Georeferenced data available



5756000008
Brazieria
obesa

H.B. Baker, 1941

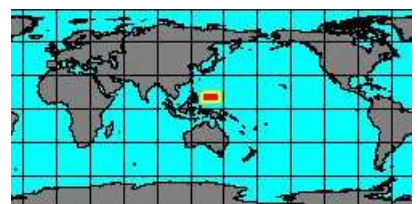
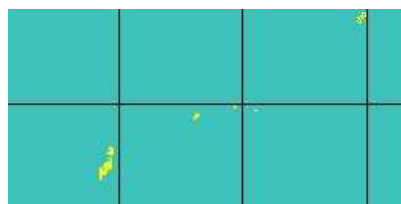
Micronesia



5756000009
Brazieria
velata

H.B. Baker, 1941

Micronesia



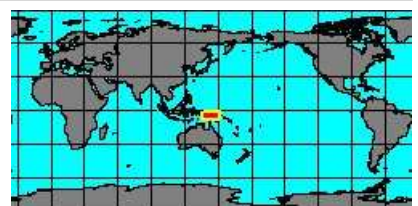
SubFamily: TROCHOMORPHINAE - **Genus: Coxia** C.M.F. Ancey, 1887 (1 SP, 1 IMG)



4340854101
Coxia
macgregori

J.C. Cox, 1870

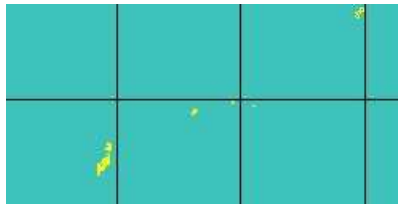
Papua New Guinea
26,4 mm



SubFamily: TROCHOMORPHINAE - **Genus: Kondoa** F.C. Baker, 1941 (3 SP, 1 IMG)

no
IMAGES
available
to be checked

4340854109
Kondoa
asteriscus
H.B. Baker, 1941
Micronesia

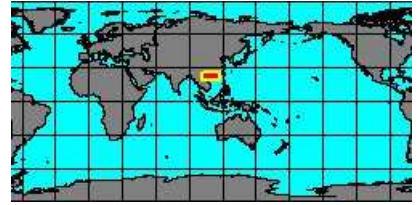
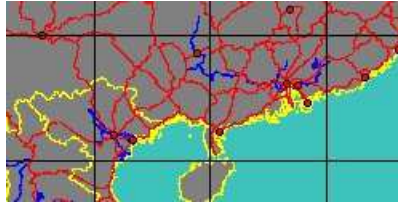


no
IMAGES
available
to be checked

5756000010
Kondoa
kondorum
Unknown
Micronesia



4340854201
Kondoa
ostreola
Unknown
Guangxi, China
15 mm



SubFamily: TROCHOMORPHINAE - **Genus: Trochomorpha** J.A. Albers, 1850 (syn: Nigritella - 49 SP, 16 IMG)

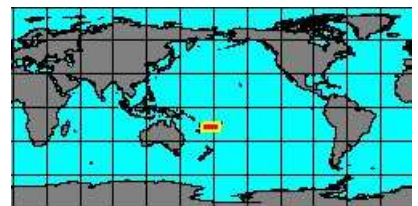
no
IMAGES
available
to be checked

5756000031
Trochomorpha
albocincta
(L. Pfeiffer, 1845)

No Georeferenced data available

no
IMAGES
available
to be checked

5756000003
Trochomorpha
apia
(J.B. Hombron & C.H. Jacquinot, 1852)
Fiji Islands



no
IMAGES
available

4340854013
Trochomorpha
approximata
E.J. Le Guillou
Micronesia



no
IMAGES
available
to be checked

5756000029
Trochomorpha
aukiensis
W.F. Clapp, 1923

No Georeferenced data available

no
IMAGES
available
to be checked

5756000027
Trochomorpha
bakeri
G.A. Solem, 1959

No Georeferenced data available

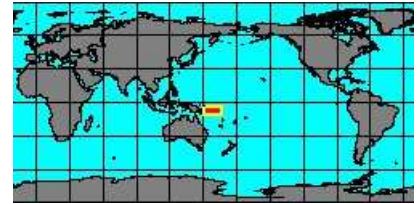
no
IMAGES
available
to be checked

575600032
Trochomorpha
beckiana
(O.F. von Mölendorff, 1842)

No Georeferenced data available



4333454005
Trochomorpha
belmorei
J.C. Cox
Solomon Islands
25 mm



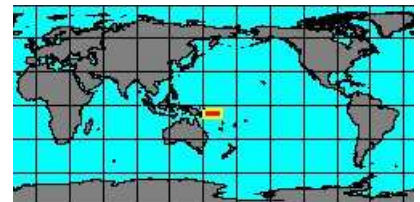
no
IMAGES
available
to be checked

575600011
Trochomorpha
carolinae
H.B. Baker, 1941

No Georeferenced data available

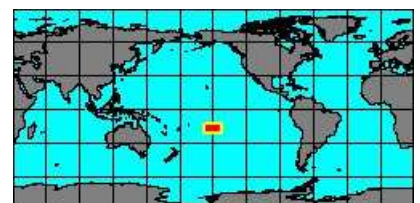


4340854197
Trochomorpha
concava
W.F. Clapp, 1923
Solomon Islands
25,3 mm



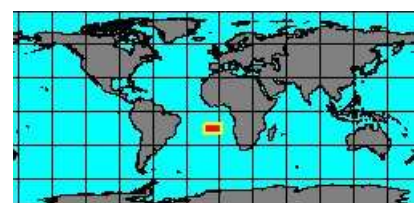
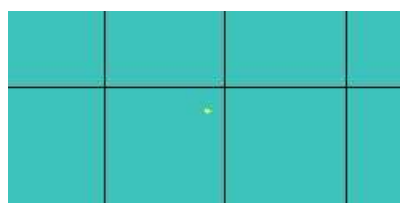
no
IMAGES
available
to be checked

575600012
Trochomorpha
conoidea
H.B. Baker, 1941
Society Islands



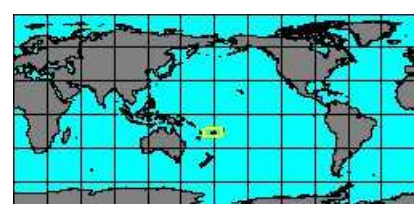
no
IMAGES
available
to be checked

575600013
Trochomorpha
contigua
H.B. Baker, 1941
Ascension Island

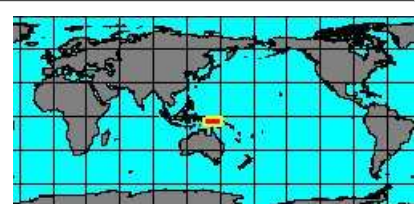


no
IMAGES
available
to be checked

575600019
Trochomorpha
corallina
A. Mousson, 1870
Fiji



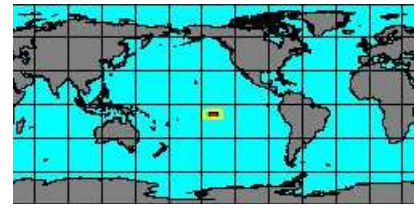
4340854198
Trochomorpha
cornea
C. Hedley, 1891
Papua New Guinea





4340854193
Trochomorpha
cressida

A.A. Gould, 1843
French Polynesia
15 mm



5756000034
Trochomorpha
crustulum

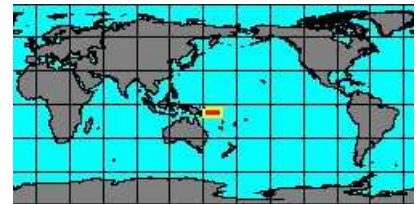
(J.C. Cox, 1873)

No Georeferenced data available



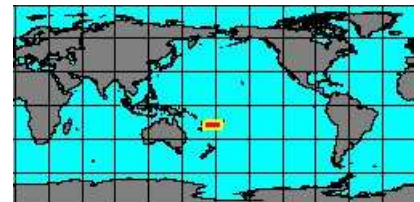
4340854205
Trochomorpha
deiopeia

(G.F. Angas, 1869)
Solomon Islands
20 mm



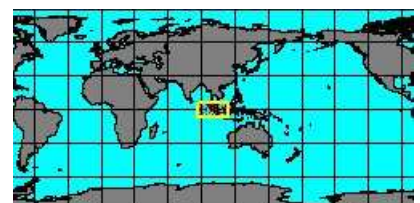
5756000016
Trochomorpha
depressostrata

A. Mousson, 1870
Fiji Islands



4340854021
Trochomorpha
dohertyi

T.H. Aldrich, 1898
Indonesia, Sumatra



5756000036
Trochomorpha
eudora

(G.F. Angas, 1869)

No Georeferenced data available



5756000037
Trochomorpha
eurydice

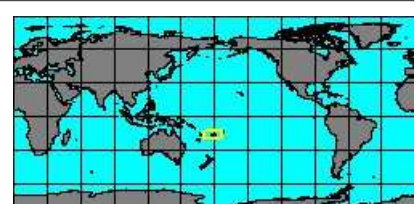
(A.A. Gould, 1848)

No Georeferenced data available



5756000020
Trochomorpha
fessonia

G.F. Angas, 1869
Fiji





575600030
Trochomorpha
flava

W.F. Clapp, 1923

No Georeferenced data available



575600038
Trochomorpha
godeti

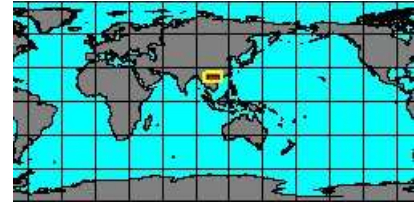
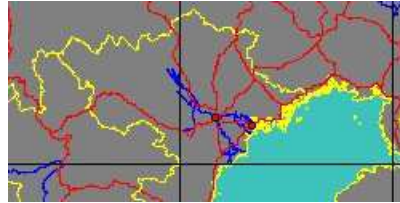
(G.B. Sowerby, 1869)

No Georeferenced data available



575600052
Trochomorpha
hamonvillei

P. Dautenberg
North Vietnam



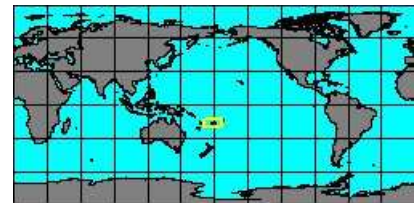
synonyms:

- *Helix bicolor* L.J. Morlet, 1886



575600021
Trochomorpha
kambarae

H.B. Baker, 1941
Fiji



575600022
Trochomorpha
kantavuensis

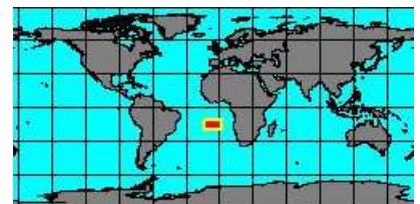
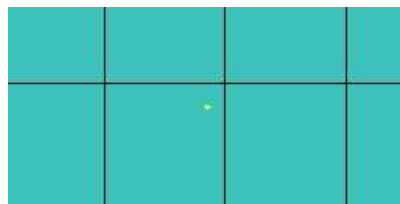
A. Garrett, 1887

No Georeferenced data available



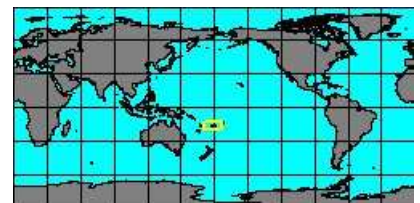
575600014
Trochomorpha
kuesteri

(L. Pfeiffer)
Ascension Island



575600023
Trochomorpha
latimarginata

(E.A. Smith, 1884)
Fiji



575600015
Trochomorpha
lomonti

(J.W. Brazier, 1877)
Papua New Guinea
22 mm



no
IMAGES
available

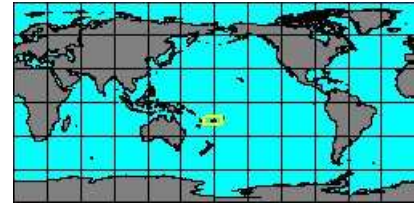
4340854206
Trochomorpha
ludersi
(L. Pfeiffer, 1855)

No Georeferenced data available

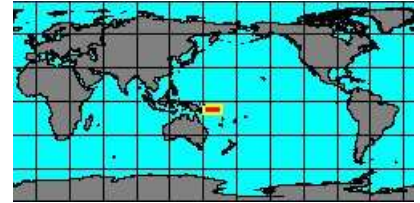
no
IMAGES
available

to be checked

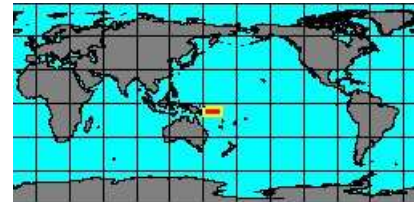
5756000024
Trochomorpha
ludersi
L. Pfeiffer, 1855
Fiji



4340854029
Trochomorpha
mcleani
W.J. Clench
Solomon Islands
30,1 mm



4340854037
Trochomorpha
meleagris
L. Pfeiffer, 1845
Solomon Islands
21 mm

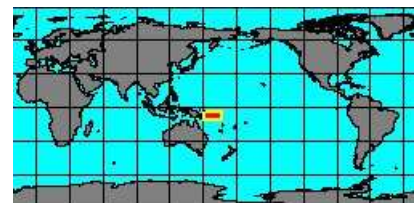


no
IMAGES
available

4340854045
Trochomorpha
melvillensis
G.A. Solem, 1989
Northern Territory

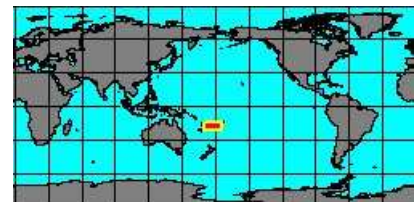


4340854200
Trochomorpha
merziana
L. Pfeiffer, 1852
Solomon Islands
20 mm

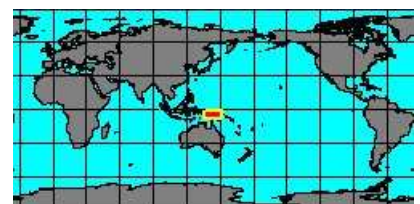


no
IMAGES
available

5140000011
Trochomorpha
merzianoides
A. Garrett
Fiji Islands

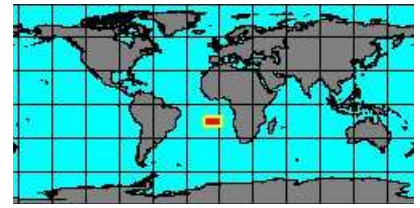
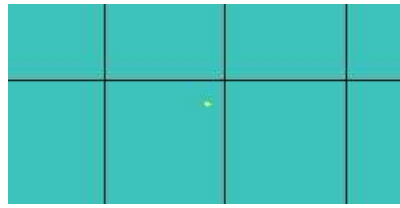


4340854199
Trochomorpha
nigrans
E.A. Smith, 1889
Papua New Guinea



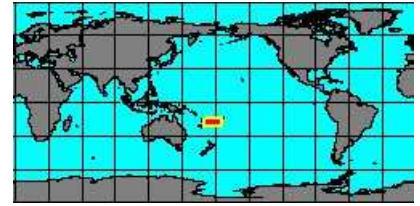
no
IMAGES
available

4340854053
Trochomorpha
nigritella
L. Pfeiffer, 1845
Ascension Island

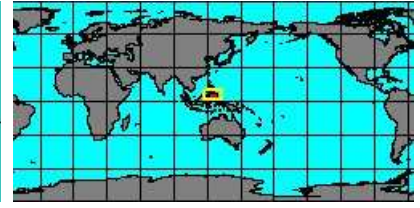


no
IMAGES
available

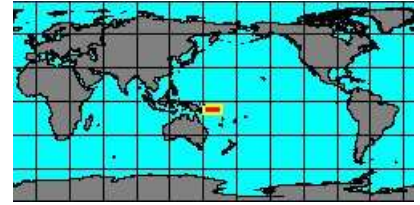
5756000017
Trochomorpha
planoconus
A. Garrett
Fiji Islands



4340854061
Trochomorpha
schmackerii
O.F. von Möllendorff, 1894
Philippines, Balut Island
31 mm



4340854077
Trochomorpha
sebacea
L. Pfeiffer, 1856
Solomon Islands



no
IMAGES
available

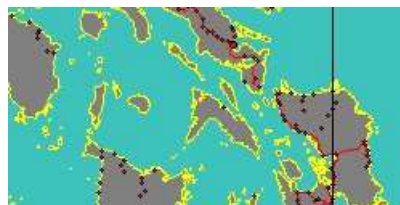
5756000046
Trochomorpha
serena
(J.C. Cox, 1873)

No Georeferenced data available

to be checked



4333454010
Trochomorpha
sibuyanica
J.G. Hidalgo, 1866
Philippines, Masbate Island
22 mm



no
IMAGES
available

5756000048
Trochomorpha
swainsoni
(L. Pfeiffer, 1846)

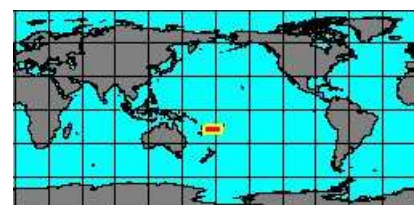
No Georeferenced data available

synonyms:

- *Planamastra depressiformis* W.H. Pease

no
IMAGES
available

5756000018
Trochomorpha
tavinniensis
A. Garrett
Fiji Islands





575600049
Trochomorpha
troilus
(A.A. Gould, 1846)

No Georeferenced data available



4333454015
Trochomorpha
typus
H.B. Baker, 1938
French Polynesia, Raiatea
14 mm

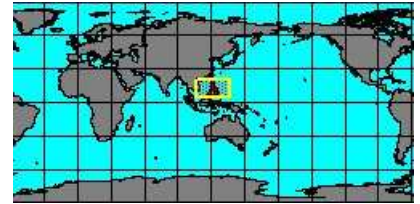


synonyms:

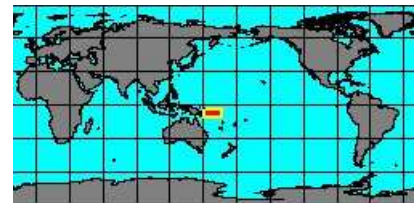
- Trochomorpha trochiformis A.E.J. Férussac



4333454020
Trochomorpha
videna
L. Pfeiffer
Philippines
20 mm



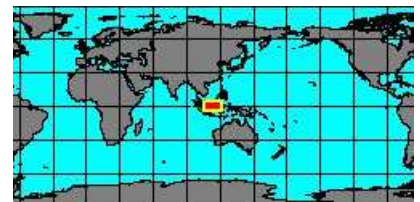
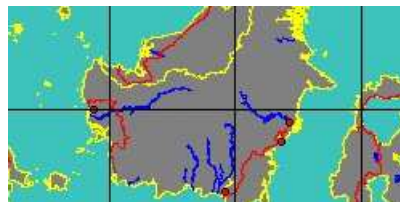
4340854085
Trochomorpha
xiphias
L. Pfeiffer, 1856
Solomon Islands
15 mm



SubFamily: TROCHOMORPHINAE - **Genus: Videna** H. Adams & A. Adams, 1855 (28 SP, 13 IMG)



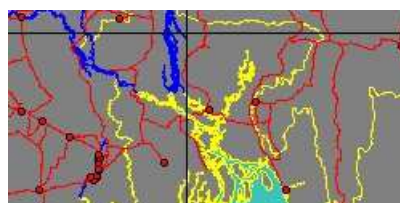
4340854204
Videna
bicolor
E.C. Von Martens, 1864
Indonesia, Borneo
13 mm



4340854000
Videna
carthcartae
(L.A. Reeve, 1854)
Okinawa



5756000026
Videna
castra
(W.H. Benson, 1852)
Bangladesh



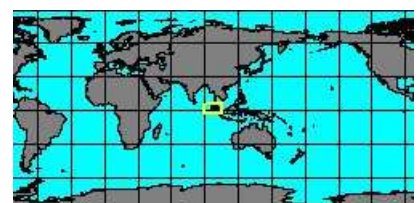
synonyms:

- Sivela castra W.H. Benson, 1852

- Helix castra W.H. Benson, 1852



5756000001
Videna
crassicarinata
H.C. Fulton, 1907
Nias Island, Indonesia
15,2 mm



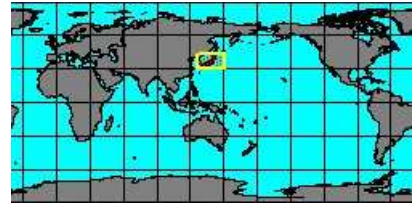
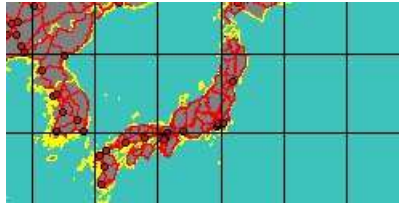
no
IMAGES
available
to be checked

575600033
Videna
crossei
(J.G. Hidalgo, 1890)

No Georeferenced data available

no
IMAGES
available
to be checked

4340854117
Videna
cultvata
H.A. Pilsbry & Y. Hirase, 1904
Japan



no
IMAGES
available
to be checked

575600025
Videna
electra
(C.G. Semper, 1873)
Palau

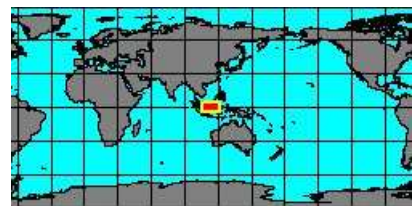
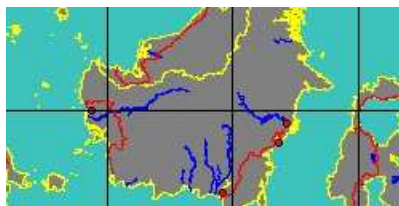


no
IMAGES
available
to be checked

4340854125
Videna
formosana
H.A. Pilsbry & Y. Hirase, 1905
Taiwan

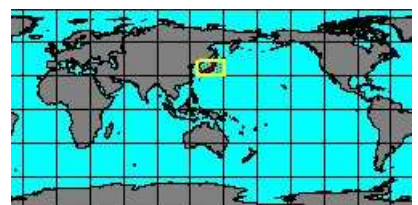
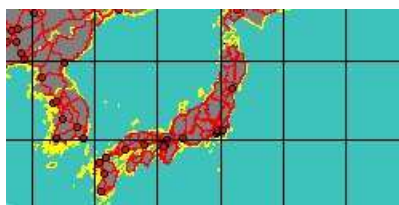


5756000050
Videna
froggatti
(T. Iredale, 1941)
Indonesia, Borneo



no
IMAGES
available

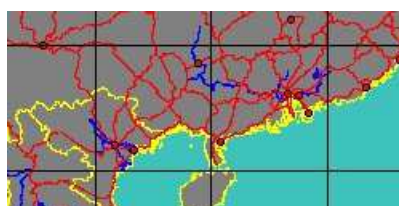
4340854133
Videna
gouldiana
H.A. Pilsbry, 1901
Japan



5756000039
Videna
granulosa
(O.F. von Möllendorff, 1888)
Philippines, Siquijor
15 mm

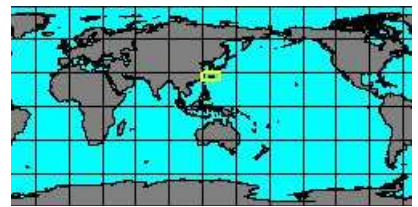


4340854141
Videna
haenseli
P.B. Schumacker & O. Böttger, 1891
Guangxi, China
15,4 mm





4340854005
Videna horiophala
 (L. Pfeiffer, 1854)
 Okinawa

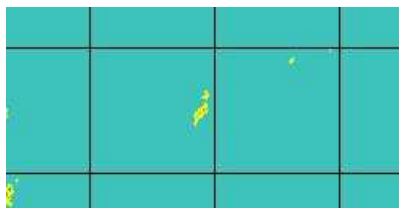


synonyms:

- Trochomorpha cultrata iheyaensis H.A. Pilsbry & Y. Hirase, 1905



4340854149
Videna lacerata
 C.G. Semper, 1874
 Palau



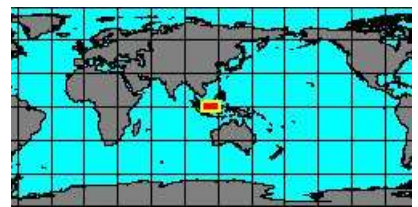
5756000042
Videna luteobrunnea
 (O.F. von Möllendorff, 1890)

No Georeferenced data available

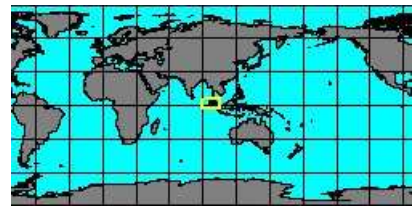
to be checked



4340854157
Videna metcalfei
 L. Pfeiffer, 1845
 Indonesia, Borneo
 20 mm



5756000002
Videna niasensis
 H.C. Fulton, 1907
 Nias Island, Indonesia
 18 mm



5756000043
Videna oleacina
 (C.G. Semper, 1874)

No Georeferenced data available

to be checked



5756000044
Videna pagodula
 (C.G. Semper, 1873)

No Georeferenced data available

to be checked



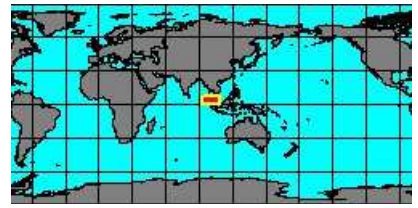
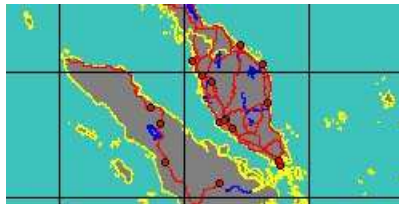
4340854165
Videna pellucida
 H.A. Pilsbry & Y. Hirase, 1905
 Taiwan



to be checked



4340854202
**Videna
planorbis**
R.P. Lesson, 1831
Malaysia
10,2 mm

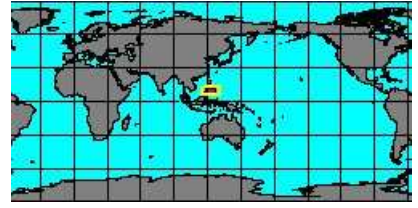


5756000028
**Videna
pumila**
(H.B. Baker, 1941)

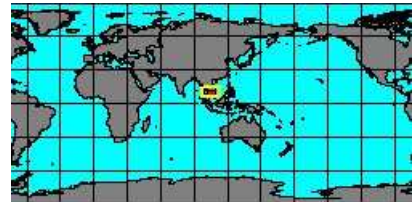
No Georeferenced data available



4340854173
**Videna
repanda**
L. Pfeiffer, 1861
Philippines, Siquijor
20,3 mm



5756000045
**Videna
sapeca**
(P.M. Heude, 1890)
South Vietnam



synonyms:

- Geotrochus sapeca P.M. Heude, 1890



4340854181
**Videna
shermani**
L. Pfeiffer, 1865
Taiwan

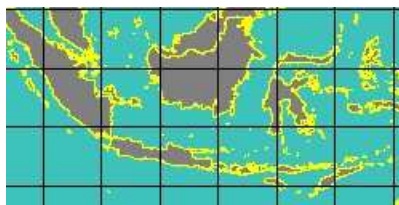


5756000047
**Videna
splendidula**
(O.F. von Möllendorff, 1890)

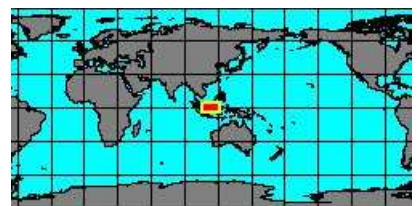
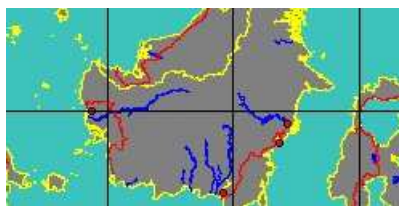
No Georeferenced data available



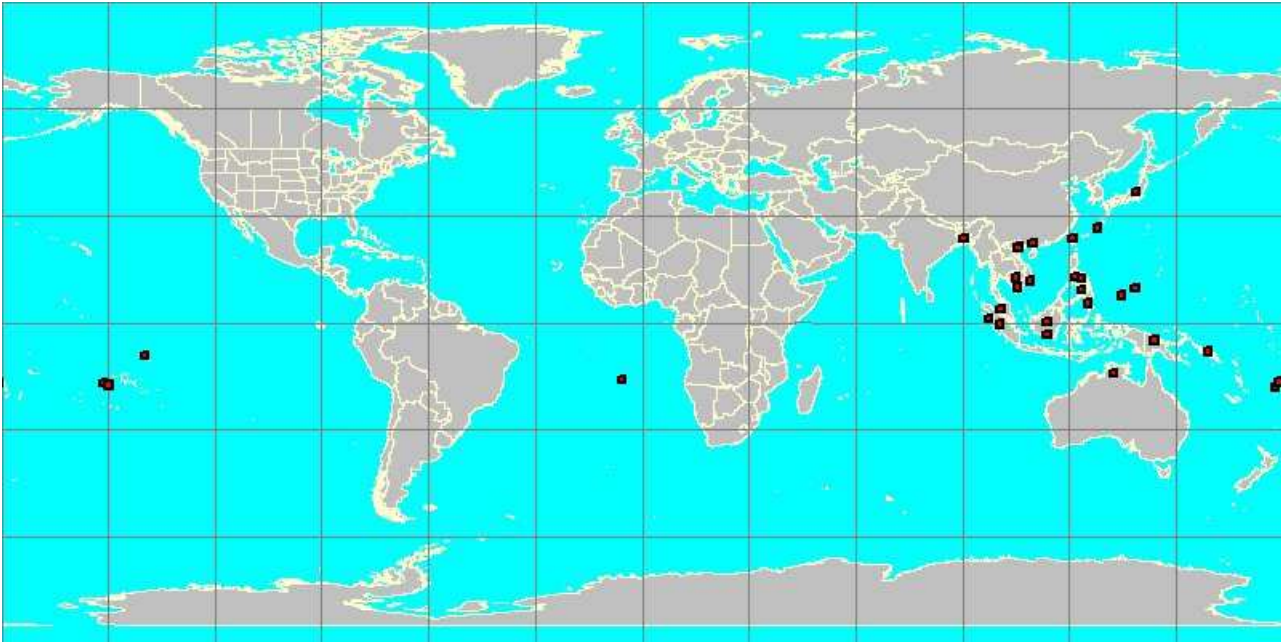
4340854203
**Videna
strubelli**
O. Böttger, 1890
Indonesia
15,2 mm



5756000051
**Videna
timorensis**
(E.C. Von Martens, 1867)
Indonesia, Borneo



Family: TROCHOMORPHIDAE



red squares show where each species has been georeferenced

each square has a size of 2 degrees

an interactive version of this image can be accessed at
<http://www.bagniliggia.it/WMSD/FamilyMap/TROCHOMORPHIDAEmap.htm>

please note that this is not the complete coverage of this family
the Data Base is not exhaustive and only one specimen per species has been georeferenced

this map is only the graphic summary of the WMSDB Data Base up to now

the total number of georeferenced species in this map is: 70 from a total of 94